

BRONTO SKYLIFT S 46 XDT



IDEAL FOR

- Window cleaning
- Inner city and outreach work
- Bill posting
- Film and TV work
- Roof inspections

FLOOR LOADINGS

Surface	Metric	Imperial
Maximum Outrigger Pressure	8.30kg/cm ² or 814kN/m ²	17000lb/ft ²
Max. Ground Pressure using Outrigger Spreader Pad	3.10kg/cm ² or 304kN/m ²	6349lb/ft ²

SPECIFICATIONS

Specification	Metric	Imperial
Working Height	45.50m	149ft 4in
Platform Height	43.50m	142ft 9in
Working Outreach @360kg SWL	24.00m	78ft 9in
Working Outreach @700kg SWL	20.00m	65ft 7in
Slew	+/- 280°	
Width	Travelling	2.50m / 8ft 2in
	Working	2.80m - 6.20m / 9ft 2in - 20ft 4in
Height (stowed)	3.75m	12ft 4in
Length	10.50m	34ft 5in
Gross Vehicle Weight	18,000kg	39,690lb
Platform Capacity	700kg	1,544lb
Platform Size	2.50m x 1.05m	8ft 3in x 3ft 5in
	0.75m x 0.65m x 0.05m	30in x 26in x 2in



46m

CASE STUDY

NATURE OF JOB: Maintenance on electricity pylons and power lines.

REASON FOR CHOOSING THIS MACHINE: 46m working height, large basket capacity, ability to travel between multiple locations.

CHALLENGE: Working on power lines at a height of 46m before de-rigging and driving on to the next pylon.

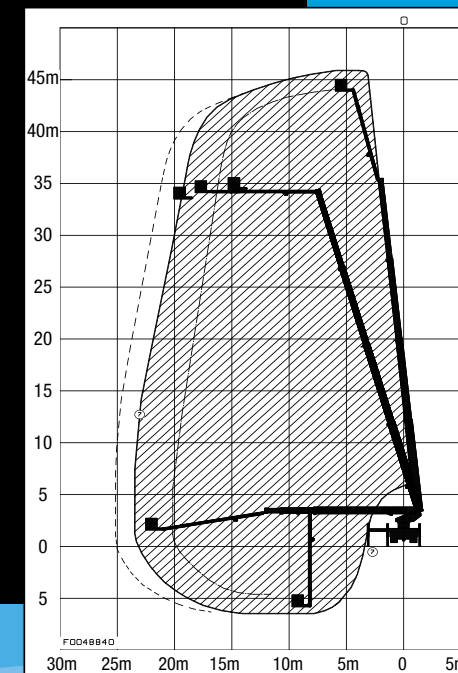
EQUIPMENT: Bronto Skylift S 46 XDT



SOLUTION

A company in Ireland had to carry out a multi million euro project to repair, upgrade and maintain electricity pylons and power lines at heights of up to 46 metres. These jobs were in multiple locations and often in remote areas.

Compact dims and minimal overhangs helped get the Truck Mounts into some tight locations.



BRONTO SKYLIFT S 46 XDT

