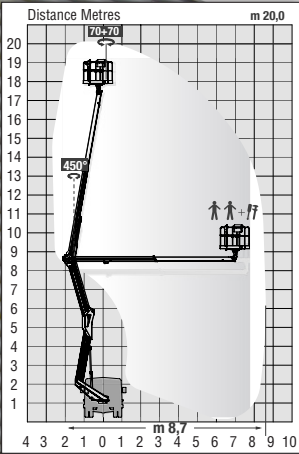


SELF DRIVE



GSR B200PX



IDEAL FOR

- General maintenance
- Signage
- Inner city work
- Roof repairs
- Tree surgery
- Utilities

GSR B200PX

Specification	Metric	Imperial
Working Height	20.1m	65ft 9in
Platform Height	17.90m	58ft 9in
Max Outreach	8.70m	28ft 6in
Safe Working Load (SWL)	300kg	660lb
Length	6.10m	20ft
Width	2.20m	7ft 3in
Height	3.00m	9ft 10in
Weight	3500kg	7718lb
Outriggers (W)	3.00m	9ft 10in
Power Source	Diesel	