

# BRONTO SKYLIFT

## S 70 XDT

## S 70 XR



### S 70 XDT FLOOR LOADINGS

Max. Ground Pressure using Outrigger Spreader Pad	3.72kg/cm <sup>2</sup>	364.29kN/m <sup>2</sup>
---	------------------------	-------------------------

### S 70 XR FLOOR LOADINGS

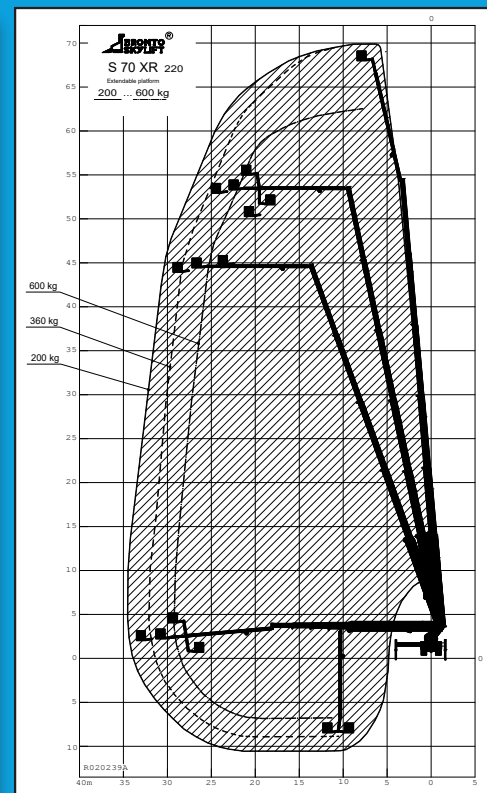
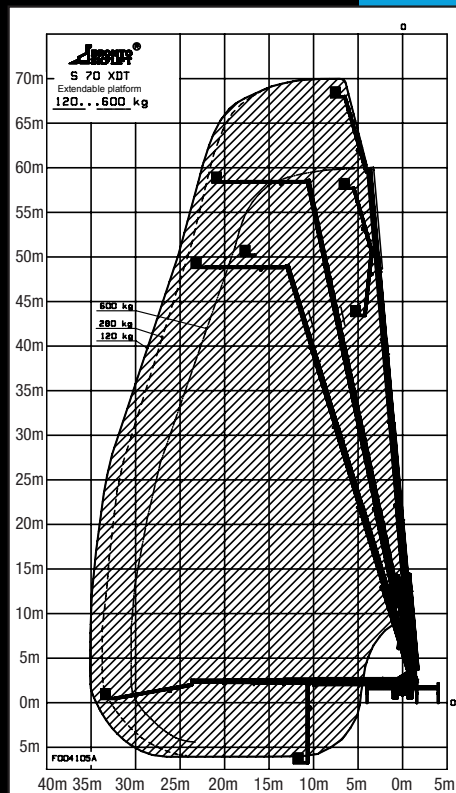
Max. Ground Pressure using Outrigger Spreader Pad	3.35kg/cm <sup>2</sup>	328.57kN/m <sup>2</sup>
---	------------------------	-------------------------

### S 70 XDT SPECIFICATIONS

Specification	Metric	Imperial
Working Height	70.00m	229ft 8in
Platform Height	68.00m	223ft 1in
Working Outreach @280kg SWL	33.50m	109ft 11in
Working Outreach @600kg SWL	30.50m	100ft 1in
Negative Reach	6.00m	30ft
Slew	+/- 280°	
Width	Travelling	2.50m 8ft 2in
	Working	2.80m - 8.00m 9ft 2in - 26ft 3in
Height (stowed)	4.00m	13ft 2in
Length	12.30m	40ft 4in
Gross Vehicle Weight	36,000kg	79,380lb
Platform Capacity	600kg	1,322lb
Platform Size (Extendable)	2.50m - 3.70m x 1.05m	8ft 3in - 12ft 2in x 3ft 5in
	Outrigger Spreader Pad	950mm ø 37in ø

### S 70 XR SPECIFICATIONS

Specification	Metric	Imperial
Working Height	70.00m	229ft 8in
Platform Height	68.00m	223ft 1in
Working Outreach @200kg SWL	34.00m	111ft 7in
Working Outreach @600kg SWL	30.00m	98ft 5in
Negative Reach	11.00m	36ft
Slew	+/- 280°	
Width	Travelling	2.50m 8ft 2in
	Working	2.80m - 8.00m 9ft 2in - 26ft 3in
Height (stowed)	3.95m	12ft 11in
Length	12.00m	39ft 4in
Gross Vehicle Weight	32,000kg	70,547lb
Platform Capacity	600kg	1,322lb
Platform Size (Extendable)	1.1m x 2.4m (3.7m)	3ft x 7ft 10in (12ft 1in)
	Outrigger Spreader Pad	950mm ø 37in ø



# 70m